

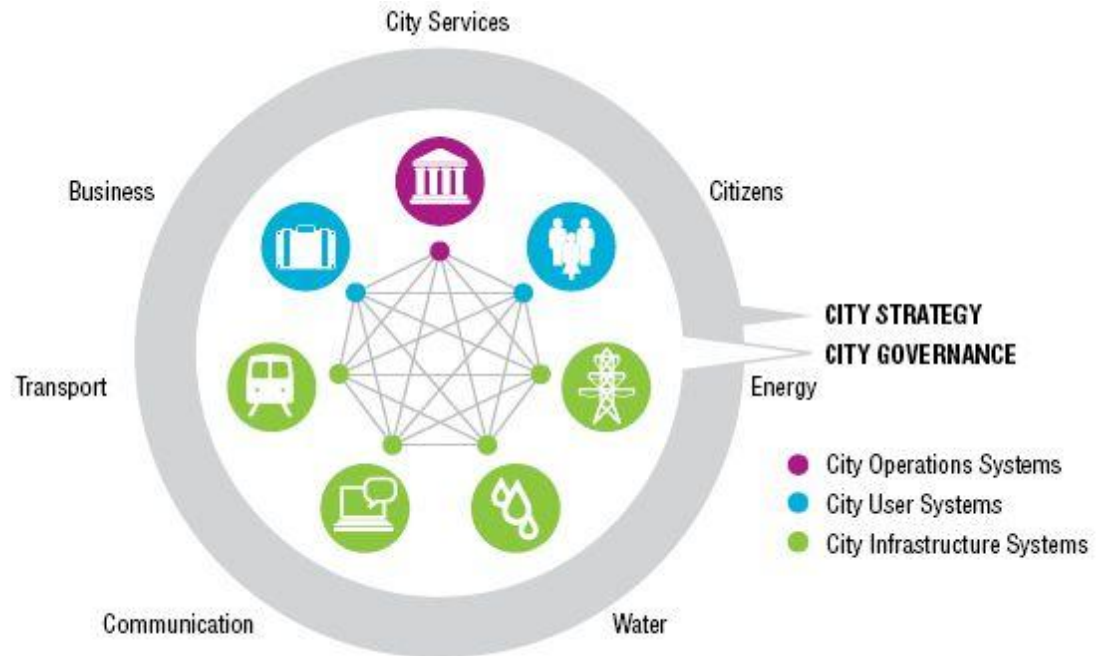
# Is There a Need for a Cloud Platform for European Smart Cities?

**Dr Julia A Glidden**  
**21c Consultancy**  
United Kingdom



**Increased Citizen Expectations** and the current economic crisis are creating new demands

**Cities must deliver more for less** i.e. better infrastructures and more efficient and responsive services





## Living Labs

effective means to close gap between R&D and market take up

**However,** many Living Labs are still a fragmented and hyper local phenomena



- Use the **Cloud** as the basis for a European-based web-service delivery platform
- Pilot '**Smart City**' use of the platform across Europe
- Develop a **Roadmap** for pan-European implementation

**EPIC** unites world leading Living Lab, municipality and technology partners with innovative SMEs and subject matter experts in order to ensure that end-of-project results help European cities become smarter and more innovative in the way they deliver services.







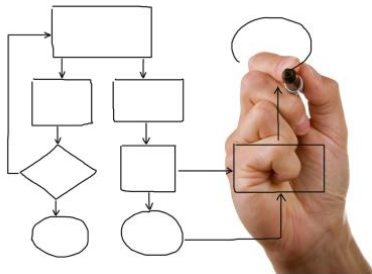
## Outcome 1: Infrastructure

- A tested prototype for a pan-European web service delivery platform with IoT (Internet of Things) extensions



## Outcome 2: Web services

- A range of eGovernment web-based services extending to the private sector and to citizens



## Outcome 3: Implementation Strategy

- A deployment Roadmap that shows how a 'Smart City' can transition to and benefit from web-based services and Cloud Computing



## Stakeholder Workshops in Brussels, Manchester and Issy-les-Moulineaux



### Improve Existing Services

- No desire for additional public services until originals improved

### Increase in-house knowledge

- Trust is an important factor in cross-border service delivery

### Establish Service Level Agreements

- Will better enable sharing of service applications

### Comply with Accessibility Regulations

- Takes priority over functionality issues



## Case for Need Made:

Preliminary findings confirm original business case and identified key concerns and challenges

## Next Phase:

Test whether Cloud architecture which connects and integrates several services to overcome identified challenges by creating a scalable pan-European platform for e-service delivery



Find out more at: [epic-cities.eu](http://epic-cities.eu)

Join the Facebook Group: [Cloud and the City](#)