



European
Commission



September, 2012

EPIC

European Platform for Intelligent Cities

ABSTRACT : the final objective of EPIC is to be the first choice service innovation and delivery platform (with Roadmap) for medium sized (50.000–500.000 habitants) cities across Europe, where any city can cost-effectively share, access and adapt a range of services to work smarter to meet the needs of most, if not all, their citizens, visitors and a wide range of business/social relations.

AT A GLANCE

Project: EPIC

Project Coordinator : Pieter Ballon, IBBT

Partners from: Belgium, France, Germany, Greece, Romania and the United Kingdom

Duration: Three Years

Total Cost: 5,994,924 EUR

Programme: ICT PSP 4th Call

Further information:

Pieter.ballon@ibbt.be

www.epic-cities.eu

Scope and Objectives

Since early 1995, the European Commission has attempted to improve government services, transactions and interactions with European citizens and businesses through the funding and deployment of a wide variety of strategic ICT initiatives. Yet until very recently technical and procedural limitations have combined to prevent European cities from truly harnessing the full power of ICT to collaborate, create and deliver genuinely 'smarter' citizen and business centred services.

Infrastructure and interoperability challenges have forced cities to use their own, often bespoke, hardware and software, while cost, alongside traditional market barriers, have prevented them from accessing and deploying many of the most innovative and state-of-the-art products and ideas.

The current economic crisis combined with growing citizen expectations, however, is placing increasing pressure on European cities to overcome these barriers and provide better and more efficient infrastructures and services, often for less cost. Innovative, ICT-based solutions – particularly those created in the user driven, open innovation environments of Living Labs (LLs) – hold an important key to helping European cities resolve this dilemma and work smarter.

The European Platform for Intelligent Cities – **EPIC** – will combine innovation ecosystem processes, fully researched and tested e-Government service applications and new cloud computing technologies to create the first truly scalable and flexible pan-European platform for innovative, user-driven public service delivery, along with a user Road Map.

Living Labs help individual public administrations harness the power of Web 2.0 and future policy directions to develop and deliver citizen and business-driven services. Cloud computing is increasingly helping the private sector to reduce cost, increase efficiency and work smarter. **EPIC** is unique in that combines both of these innovations in a first-of-its-kind way to enable 1) local SME's to rapidly prototype scalable new user-driven solutions, 2) innovative public administrations to test and deploy them and 3) cities across Europe to ultimately access and use them.

In so doing, **EPIC** will present public administrations – regardless of whether they have a Living Lab – with a unique opportunity to cut costs and drive innovation by providing access to a market-leading shared infrastructure that facilitates rapid prototyping and testing.

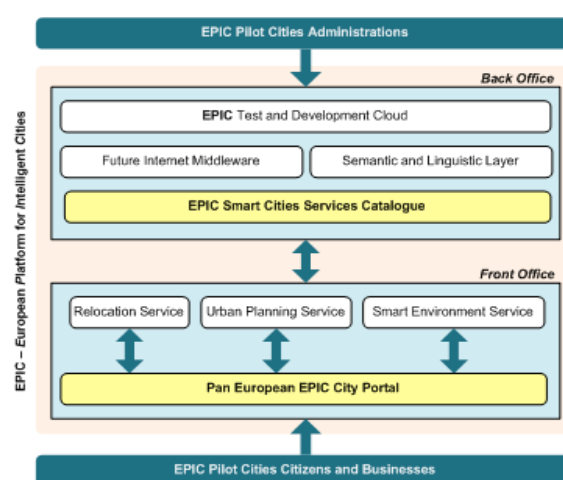
Technical Approach

The innovative EPIC service platform involves combining and integrating a number of trusted elements (see diagram opposite):

- 1) **EPIC Test and Development Cloud**
Provides a managed virtualised innovation infrastructure
- 2) **Semantic and Linguistic Layer**
Takes the solution to a mass audience and overcomes language barriers
- 3) **Future Internet Middleware**
Embeds the future internet technologies interface into the fabric of the platform
- 4) **EPIC Smart Cities Service Catalogue**
Provides information about all the available services
- 5) **EPIC City Portal**
Front end interface to access the city applications and services
- 6) **City Applications**
Leverages Living Labs and Smart Cities service delivery innovations

- 6a) Relocation Service
- 6b) Urban Planning Service
- 6c) Smart Environment Service

By bringing these solution components together to implement the unique **EPIC** platform, the project will reach out en mass to cities, Living Labs, businesses and other stakeholders to involve them in accelerating innovation and smart service delivery on a grand, never before attempted scale.



EPIC will provide added-value to cities and Living Labs by meeting their need to migrate to a 'smart,' industrial strength web-based service delivery infrastructure in a scalable and cost-efficient manner, and to easily access innovative new applications from across Europe. **EPIC** will provide added-value to citizens and business by meeting their increasing desire to access localised, user-centred government services that are on a par with other private sector offerings i.e. quicker, faster, and more personalised.

EPIC aims to be a pioneer by taking lessons from the private sector to create a first of its kind EU-wide platform that will provide a cloud-based common infrastructure for service delivery in cities from differing Member States. The **EPIC** platform will combine the latest state-of-the-art technologies, from a semantic engine, 3D Geo-locating to the Future Internet to provide new tools and

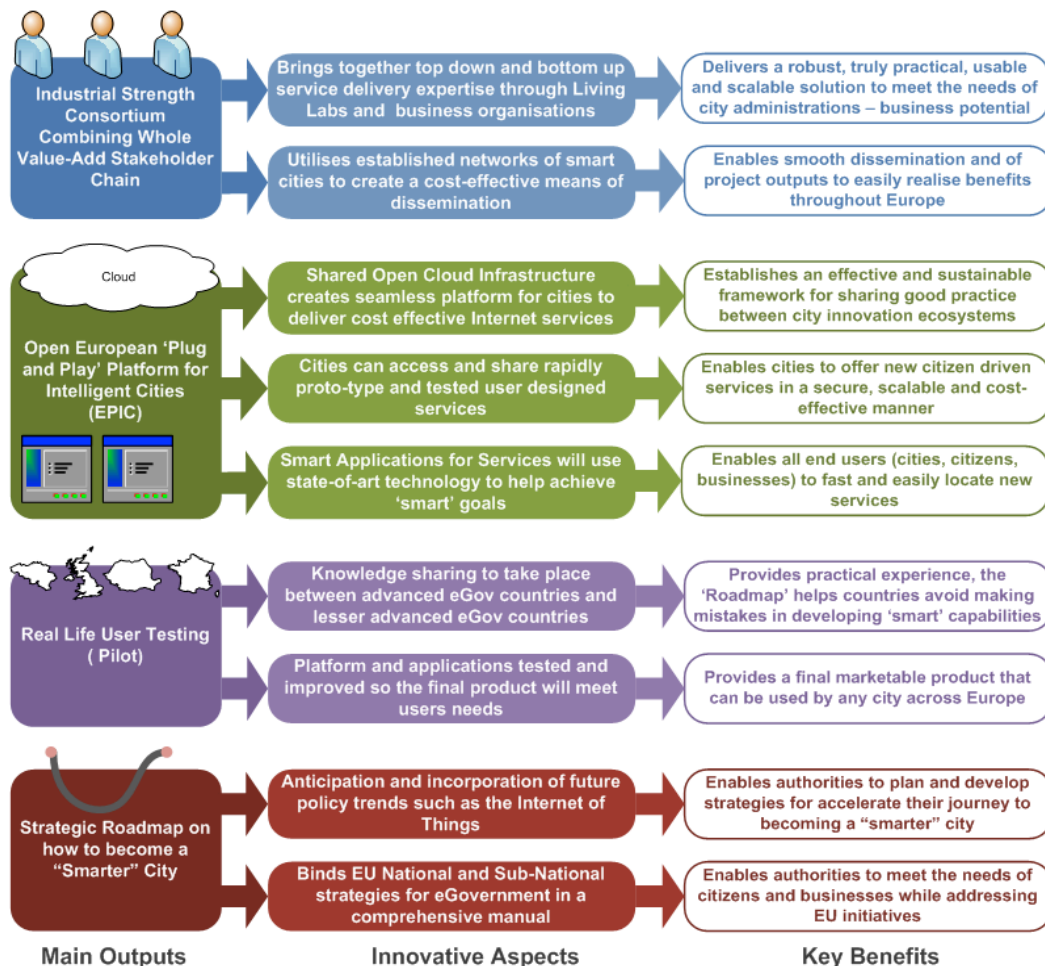
possibilities to existing city innovation ecosystems to enhance their R&D process and enable them to deliver 'smarter' city services.

In addition to providing a ground-breaking technical solution by adapting and integrating innovative technologies EPIC will also provide the tools cities need to use in order to utilise the platform appropriately to start becoming 'smarter'. The production of a pioneering EPIC roadmap will guide cities through the routes, decisions and steps they need to undertake for improving service delivery to achieve the benefits of 'smart' working.

Outcomes and Benefits

In sum, EPIC will combine i) user-driven open innovation, ii) connected smart cities and iii) web-based services in the following manner (see diagram below):

1. Partner Living Labs will use the open EPIC platform testing environment to engage citizens and SMEs in the co-design and testing of the type of 'Apple iPhone' services that citizens and businesses want and are potentially willing to pay for business-oriented, public-private partnership roadmap that incorporates a variety of differing business models from open source, to pay per use and licensing
2. Partner Smart Cities will work to plug existing and new co-designed web-based services into the open EPIC platform so that aspiring cities like Tirgu Mures in Romania, can easily connect to the platform and use them
3. Partner academic institutions and consultants will use findings from pilot trials to help create a business-oriented, public-private partnership roadmap that incorporates a variety of differing business models from open source to pay per use and licensing



The Consortium

The EPIC Consortium unites world leading Living Lab, municipality and technology partners with innovative SMEs and subject matter experts in order to ensure that end-of-project results help European cities become smarter and more innovative in the way they deliver services. It consists of a balanced mix of state-of-the-art technology innovators, advanced ‘Smart Cities,’ academic research centres and dissemination and business planning experts from across Europe.

Each partner brings relevant, high quality experience to the team, ranging from in-depth ‘Smart City’ technical design and deployment through to an extensive understanding of European project requirements and first-hand knowledge of modern city life, trends and needs.

EPIC will combine a first-of-its kind, industrial strength service delivery platform with discrete partner city application suites in order to create an end-to-end innovation ecosystem. Collectively, the EPIC Consortium as a whole will provide a powerful one-stop-shop of tactical, technical and subject matter expertise:



Org	Country	Role
IBBT iLabs.o Brussels	Belgium	Coordinator and Living Lab
IS-Practice	Belgium	Project Management
21c Consultancy	UK	Dissemination, Sustainability
European Network of Living Labs	Belgium	Dissemination
Deloitte Consulting	Belgium	Deployment Road Map
National Technical University of Athens	Greece	Usability and Evaluation
ATC	Greece	Front Office Integration
IBM Germany	Germany	Core Technology
Fraunhofer Institute, FKIE	Germany	Technology and Pilot
Issy Media	France	Living Lab and Pilot
Manchester City Council	UK	Living Lab and Pilot
City of Tirgu-Mures	Romania	Proof of Concept Pilot
Navidis	France	Technology and Pilot
Brussels Regional Informatics Centre	Brussels	Testing and Support
Birmingham City University	UK	Technology and Pilot
Immoweb	Belgium	Technology and Pilot

For further information:

Information Desk
 European Commission - Communications Networks, Content & Technology DG
 Office: BU31 01/18 B-1049 Brussels
 Email: cnect-desk@ec.europa.eu
 Tel: +32 2 299 93 99
 Fax: +32 2 299 94 99
http://europa.eu/information_society